

**EWELLIX**

MAKERS IN MOTION

# Solutions for ophthalmic equipment



# The heritage of innovation

Ewellix is a global innovator and manufacturer of linear motion and actuation solutions used in assembly automation, medical applications and mobile machinery. Formerly part of SKF Group, the Ewellix Group consists of 16 sales units and six factories. External net sales are approximately 250 EUR million and we employ around 1 250 people. Ewellix is headquartered in Gothenburg, Sweden and is owned by Triton.

## Technology leadership

Our journey began **over 50 years** ago as part of the SKF Group, a leading global technology provider, with the world's first precision ball and roller screw factories. Our history with SKF provided us with the **expertise to continuously develop new technologies** and use them to create cutting edge products that offer our customers a competitive advantage.

In 2019, we became independent from SKF and changed our name to Ewellix. **We are proud of our heritage.** This gives us a unique foundation on which to build an agile business with engineering excellence and innovation as our core strengths.

## Global presence and local support

With our **global presence**, we are uniquely positioned to deliver **standard components and custom-engineered solutions**, with full technical and applications support around the world. The long lasting relationships with our distributor partners allow us to support customers in a variety of different industries. At Ewellix, we don't just provide products; **we engineer integrated solutions** that help customers realise their ambitions.



1250 employees



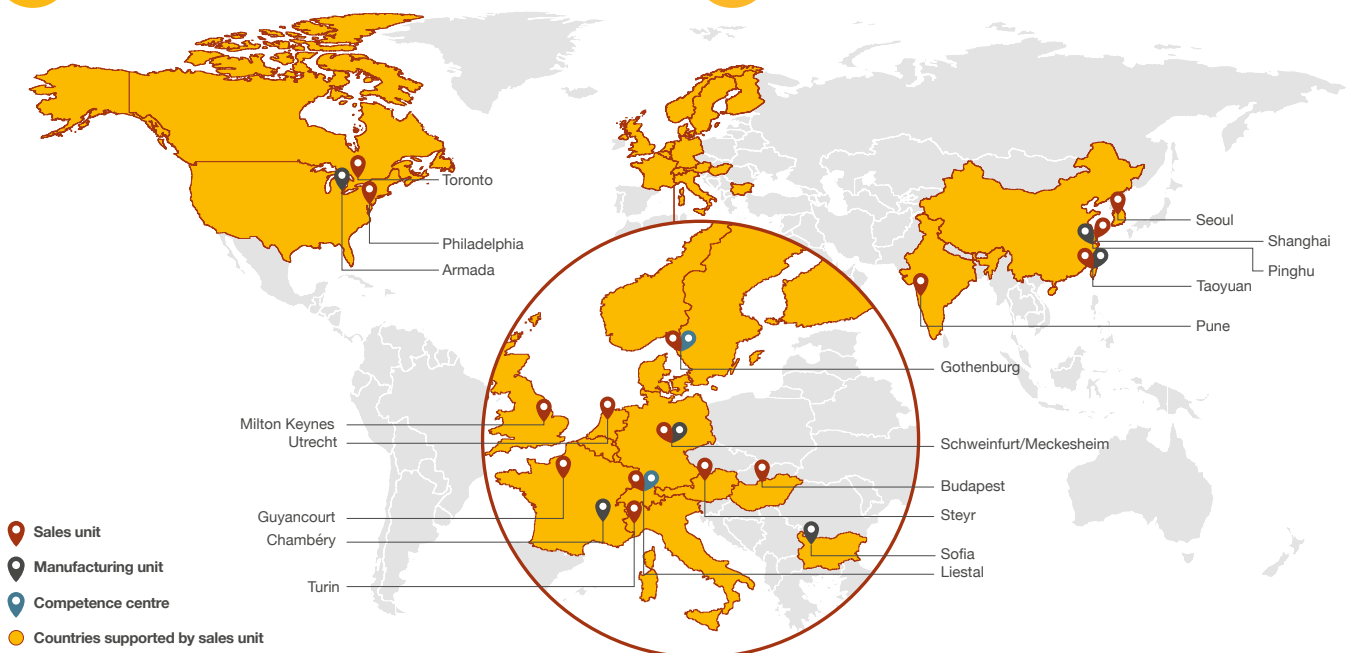
6 factories



16 sales units



2 competence centres



# Ophthalmic tables

The Ewellix electro-mechanical lifting columns for ophthalmic equipment allow designers to provide their examination equipment with precise and ergonomic movements and maximum patient comfort.

For example, series CPMA combines robust load-carrying capacity, silent lifting, and excellent design flexibility in a compact, two-section unit. A built-in universal power supply, cable-through for mains, switch and optional for LAN, and variable tube and motor placement capabilities enable several column configurations. Socket box accessories can be added to provide inlet mains socket, outlet mains socket and RJ45 connectors. Driving the lifting column only requires mains power, with no need for extra control units.

We would be more than happy to provide you with a perfectly tailored offer based on your requirements.



## Ewellix solutions

### Features

- Low retracted height and optimized stroke length
- Higher load-carrying capacity
- Soft start/stop during the complete stroke
- Low noise level and smooth motion
- Flexible plug and play platform offer
- Smart selected accessories available
- Versatile power supply options
- Optional cable-trough capabilities
- IEC-60601-1 compliant

### Benefits

- High level of comfort and safety for the patient
- Simpler and more ergonomic workstation adjustment
- No disturbing noise or vibration during operation
- Greater design flexibility and standardized features
- Reduced time to market due to a tried and tested platform

### Lifting columns



TXG



CPMA

### Operating switches



STL/STF



STK



STA

# Ophthalmic chairs

Today's ophthalmic equipment manufacturers face a challenging mix of performance and cost pressures. As a result, demand is rising for ophthalmic chairs and instrument tables that offer more precise, ergonomic motion, greater load-carrying capacity, and increased functionality.

Ewellix supports your product development with a complete platform that offers faster time to market. Our lifting columns combine smooth, silent lifting, short retracted height and a wide range of design flexibility. In addition, our linear guides provide additional freedom in positioning the patient for any ophthalmic examination.

Ewellix lifting columns for ophthalmic equipment are a complete, IEC 60601-1 compliant solution designed to help OEMs develop equipment optimized for performance and cost.



## Ewellix solutions

### Features

- Low retracted height and optimized stroke length
- Higher load-carrying capacity
- Soft start/stop during the complete stroke
- Low noise level and smooth motion
- Flexible plug and play platform offer
- Smart selected accessories available
- Versatile power supply options
- Optional cable-trough capabilities
- IEC-60601-1 compliant

### Benefits

- High level of comfort and safety for the patient
- Robust and stable patient position during the examination
- No disturbing noise or vibration during operation
- Greater design flexibility and standardized features
- Reduced time to market due to a tried and tested platform

#### Lifting columns



CPMA

THG

TFG

#### Control boxes



BCU

#### Operating switches



STL/STJ

STK

STE

EHA4/EHA3

#### Linear ball bearing

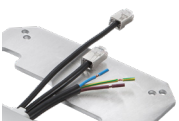
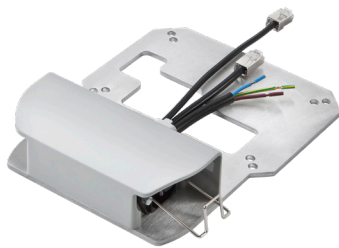


LBBR

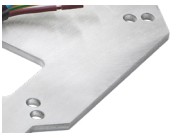
# All you need for ophthalmic instrument tables

## Lifting column – series CPMA

### Inlet socket box



Electrical connection to column (mains power, ground, switch, LAN)



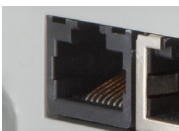
4 mm plate with 8 holes for screws to fasten column inner or outer tube to the base



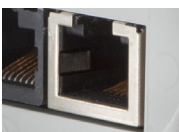
IEC inlet socket for detachable mains powercord with strain relief



2 Replaceable fuses 8 A

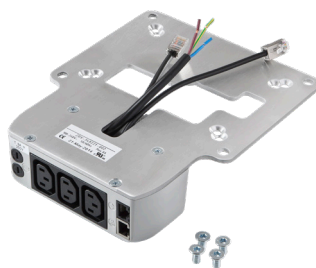


RJ45 connector for foot switch



RJ 45 connector for LAN cable

### Outlet socket box



Electrical connection to column (mains power, ground, switch, LAN)



Mechanical fastening to column inner or outer tube plate by 4 x M6 screws



Mounting plate with 4 holes to assemble table top



3 Sockets for instrument or equipment (max 8 A)



2 Replaceable fuses 8 A



LAN connection for instrument and desk switch connection



Desk switch with 2-color LED for power and feedback status



# Products overview

## Lifting columns



	TXG	CPMA	THG10-BA	TFG
Rated push load	1 500 N	2 000 N	2 000 N	2 500 N
Speed	17 to 23 mm/s	11 to 15 mm/s	5 to 15 mm/s	15 to 19 mm/s
Power supply	24 VDC / 120 VAC / 230 VAC	24 VDC / 100–240 VAC	24 VDC	24 VDC / 120 VAC / 230 VAC
Retracted length	Stroke + 180 mm	Stroke + 160 mm	Stroke + 270 mm	Stroke + 130 mm
Bending load	Up to 210 Nm	Up to 250 Nm	Up to 450 Nm	Up to 500 Nm
Stiffness	++	++	++	+++

## Control boxes



	BCU
Motor ports	3
Output voltage (nominal)	24 VDC
Total output current (max)	7A
Operating device ports	1
Single fault safety	✓
Soft Start/Stop	✓

## Linear guides



	LB-range
Size and range	3 to 80
Dynamic load rating	up to 37,5 kN
Speed	up to 5 m/sec
Acceleration	up to 100 m/ sec <sup>2</sup>
Accuracy	up to 50 µm at 4 m
Material options	Stainless steel
Characteristics	Easy integration

## Operating switches



	STL	STJ	STF	STK	STE	STA	EHA4	EHA3
Max. operating channels	1	5	3	1	5	5	1	5
Operating power	5 VDC / 20 mA	12 VDC / 50 mA	12 VDC / 50 mA	5 VDC / 20 mA	12 VDC / 50 mA	12 VDC / 50 mA	5 VDC / 20 mA	12 VDC / 50 mA
Indicator	no	no	no	2 colors LED for power and feedback status	single color LED for power status	single color LED for power status	2 colors LED for power and feedback status	single color LED for power status
Plug	RJ45	HD15	D-SUB/FCC	RJ45	HD15	D-SUB/FCC	HD15	HD15

# Supporting tool

## Digital

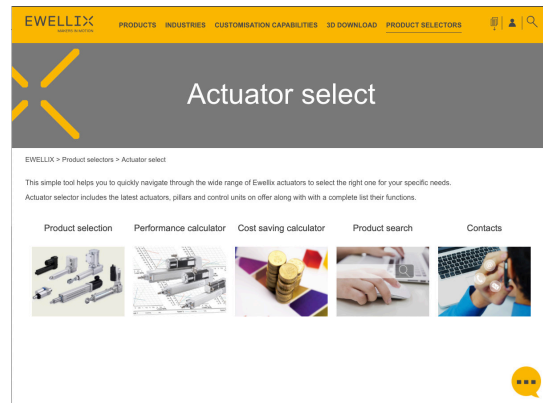
Ewellix has developed a portfolio of tool to support customers in easy selection and calculation the right Ewellix product for their application.

### Actuators

- Product selection
- Performance calculator
- Cost saving calculator

### Linear guides

- Product selection
- Product calculator
- Cross reference



## Publications

Supporting documents are available for downloading on ewellix.com in each product page under technical data section:

- operating manual
- mounting instruction

### Actuator range



### Lifting column – TXG



### Linear bearings units and shafts



### Lifting column CPMA/CPMB



### Control units



### Lifting column – TFG



### Operating switches



### Lifting column – THG





## **ewellix.com**

© Ewellix

All contents of this publication are the property of Ewellix, and may not be reproduced or given to third parties (even extracts) without permission. Although great care has been taken in the production of this catalog, Ewellix does not take any responsibility for damage or other loss resulting from omissions or typographical errors. The photo may differ slightly in appearance from the actual product. Due to continuous improvements being made in our products, the product's appearance and specifications are subject to change without notice.

**PUB NUM EL-03010-1-EN-September 2022**

Certain image(s) used under license from Shutterstock.com.